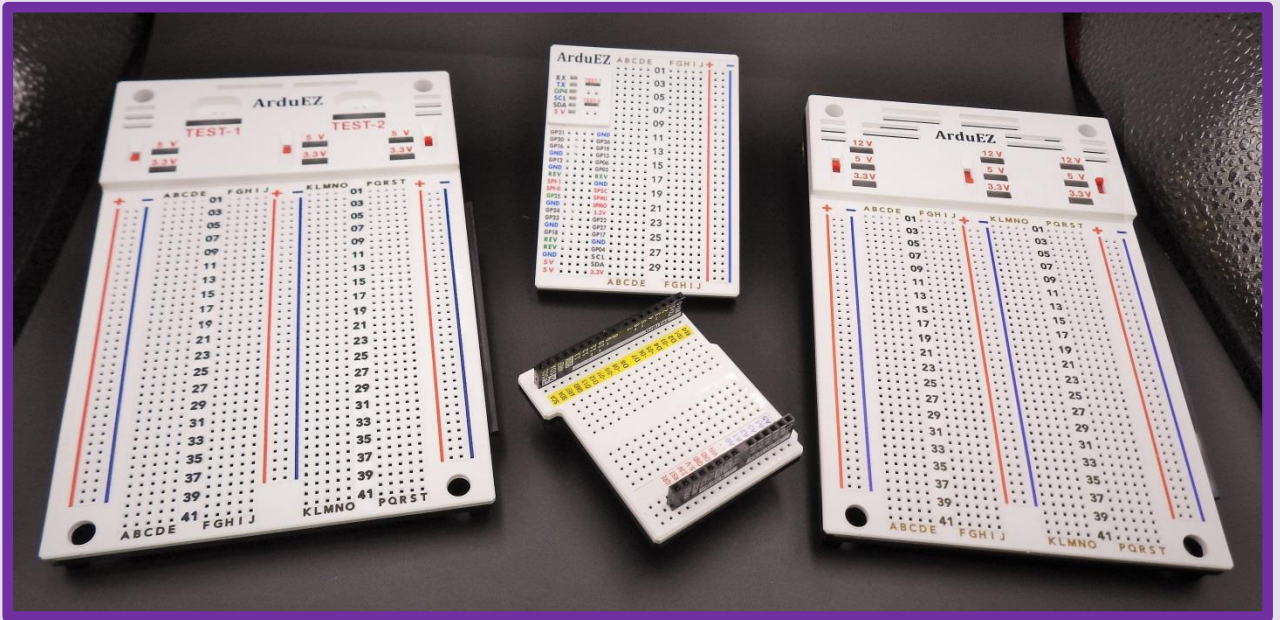


# ArduEZ

## Through Hole Serial Connection Stackable Breadboard



## Ronmee Industrial Corporation

No. 12, Lane 155, Zongxing N. St., Sanchong Dist.,  
New Taipei City, 24158 Taiwan, R. O. C.

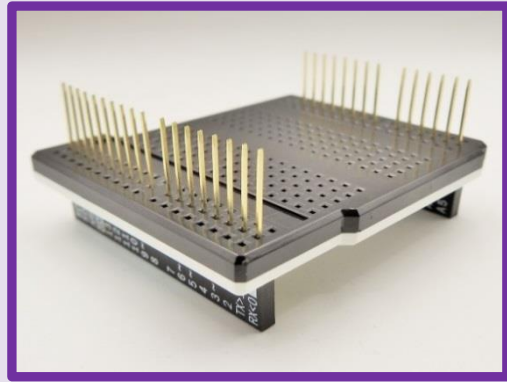
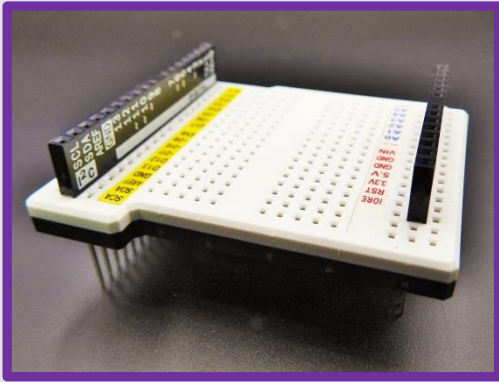
Tel : +886 2 8511-1286

Fax: +886 2 8511-1287

E-mail: ronmee2004@yahoo.com.tw

<http://www.ronmeeind.com>

# ArduEZ ONE Stackable Breadboard



**P/N: ArduEZ ONE**

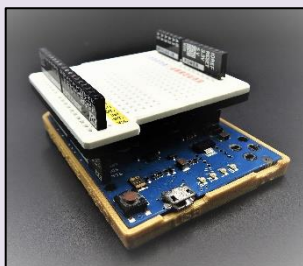
\*275 (x 2 sides) holes

## Functions:

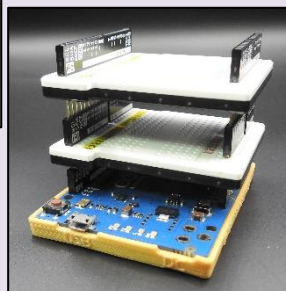
- \* Ultra-lightweight module design.
- \* Clear and firm pin function marking, available to insert/extract directly for serial connection, avoid using complicated wiring jumpers.
- \* Modular design function , suitable for flexible course change of teaching and learning easily.

## Package contains:

1. ArduEZ ONE Breadboard x 2pcs
2. Adaptor PCB (12pcs set) x 1 set
3. 2.54mm Gold plated Pin Header Strip R/A 1x40p x 1pc
4. Long-leg Female Header – a. 8+6p, b. 10+8p x 2pcs each (Insulator 8.5mm, Contacts 14.4mm/18.7mm x 1pc each)
5. Compatible Expansion board holder x 2pcs

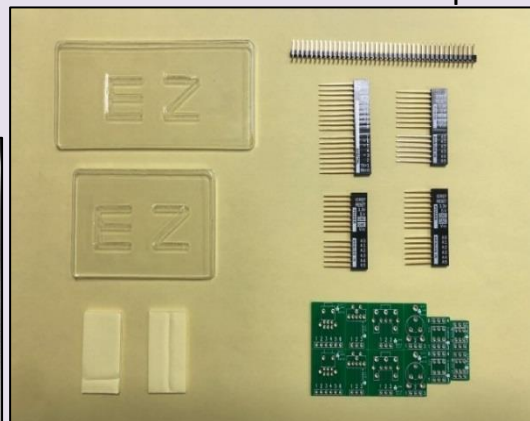


**Compatible**

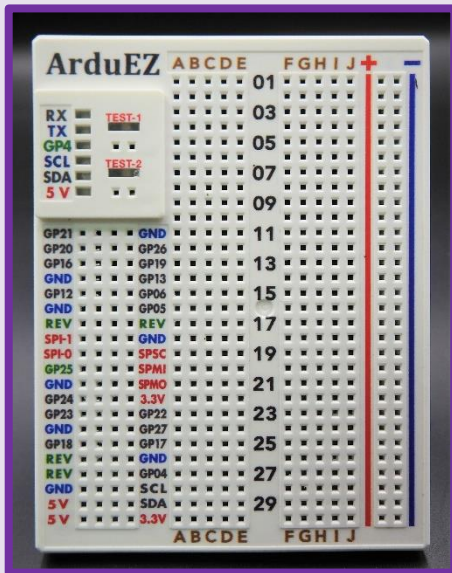


**Stackable**

Contained parts



# Raspberry Pi Dedicated Breadboard



**P/N: 20805**

- \* 150 (5x30) x2 sides Board holes
- \* 80 (4x20) x2 sides Function holes
- \* 60 (30x2) power holes
- \* 4 (2x2) Logic probe testing holes

## **Functions:**

- \* Dual microcomputer 5-states logic pen function, can distinguish positive/negative voltage, floating offline states, 3 frequency bands, and to grasp the states of circuit easily.
- \* Lightweight modular design, for easier serial connection.
- \* 6 LEDs display for the working status of the board instantly.
- \* Clear & firm embossed footprint marking.

## **Package contains:**

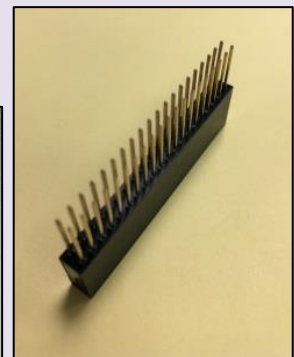
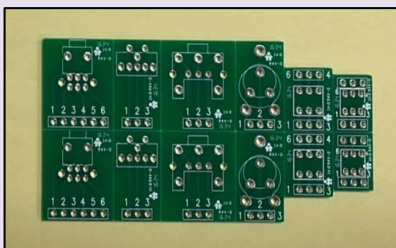
1. Raspberry Pi Dedicated Breadboard x 1pc
2. 2.54mm pitch Gold plated Pin Header Strip 1x40p R/A x 1pc
3. 2x20p long-leg gold plated Female Header x 1pc  
(Insulator 13.2mm, contacts 12.5mm)
4. Wire kit test hook x 1 pair
5. Adaptor PCB (12pcs set) x 1set

2x20p long-leg Female Header

Test Hook



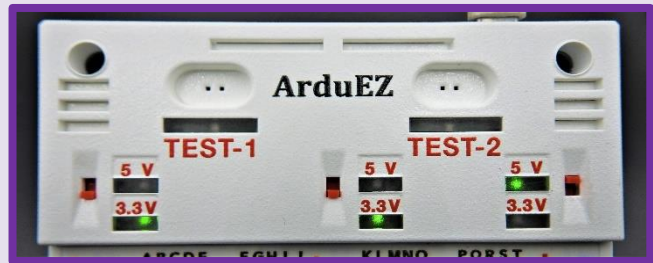
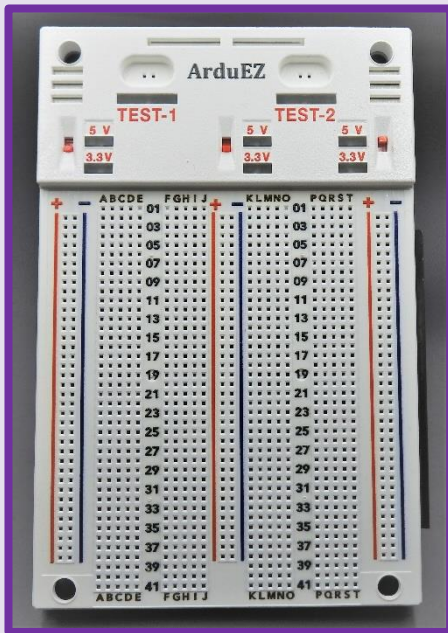
Adaptor PCB



Pin Header Strip 1x40p R/A



# Dual Power + Dual 5 states Microcomputer Logic Pen Breadboard



**P/N: 20807-2**

- \*820 (5x41x4) x2 sides Board holes
- \*180 (30x2x3) x2 sides power holes
- \*4 (2x2) Logic Probe testing holes
- \*6 Dual-Color LEDs
- \*Type C Power Socket

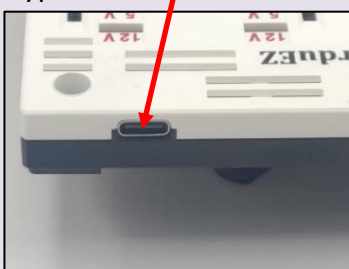
## Functions:

- \* 3.3V500mA / 5V500mA 2 groups of high-efficiency low thermal resistance switching regulated/overload protected power supply.
- \* Dual microcomputer 5 states logic probe function, available to distinguish positive/negative voltages, and floating offline states, to distinguish 3 frequency bands, to grasp the states of circuit easily.
- \* Microcomputer turned on detection, dual-color LEDs power display, fully support the electronic logic experiments.
- \* Clear & firm embossed footprint marking.

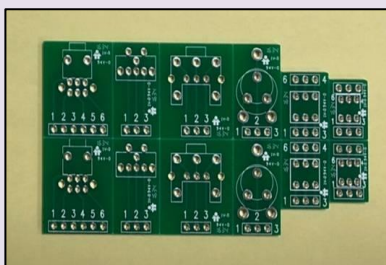
## Package contains:

1. Dual-power type with Logic probe breadboard x 1pc
2. 2.54mm pitch Gold plated Pin Header Strip 1x40p R/A x 1pc
3. Adaptor PCB (12pcs set) x1 set
4. Wire test hook x 1pc

Type C USB Power Socket



Adaptor PCB



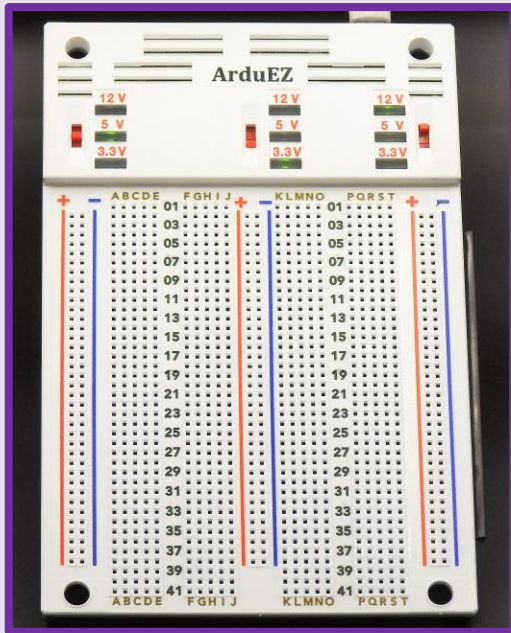
Test Hook



Pin Header Strip 1x40p R/A



# Three DC Power Supply Breadboard



**P/N: 20807-3**

- \* 820 (5x41x4) x2 sides board holes
- \* 180 (30x2x3) x2 sides power holes
- \* 3 Triple band switch set
- \* 6 Dual-color LEDs
- \* Type C USB Power Socket

## **Functions:**

- \* 3.3V500mA / 5V500mA / 12V200mA, 3 groups of high efficiency / low thermal resistance switching regulated/ overload protected short circuit test power supply.
- \* Microcomputer turned on detection, 6 Dual-color LED power supply display, fully support electronic logic experiments.
- \* Clear & firm embossed footprint marking.

## **Package contains:**

1. Three DC power supply breadboard x 1pc
2. 2.54mm Gold plated Pin Header Strip 1x40p R/A x 1row
3. Adaptor PCB (12pcs set) x1set

Type C USB Power Socket



Adaptor PCB



2.54mm Pin Header Strip  
1x40p R/A

