

Rev	Description	Date
0	New Drawing	2022/02/17

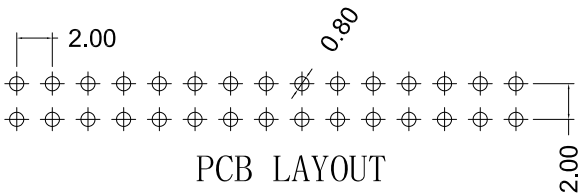
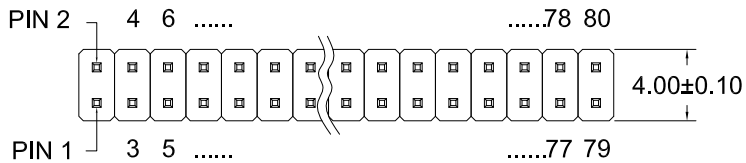
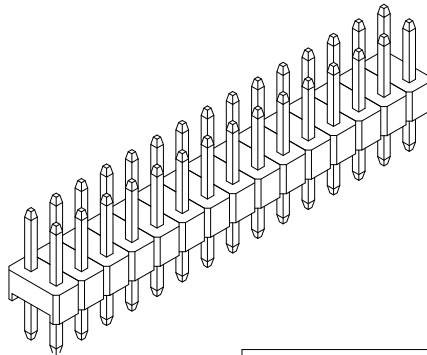
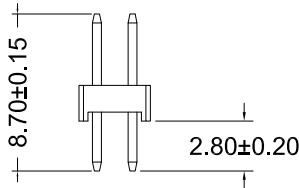
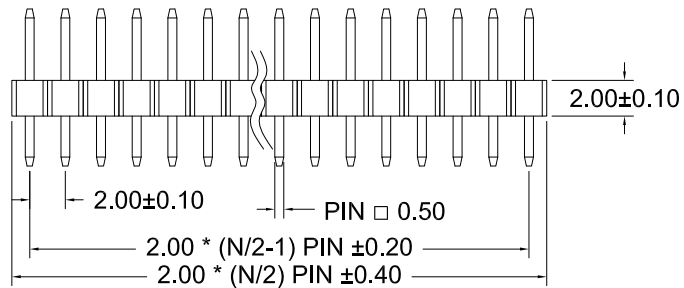
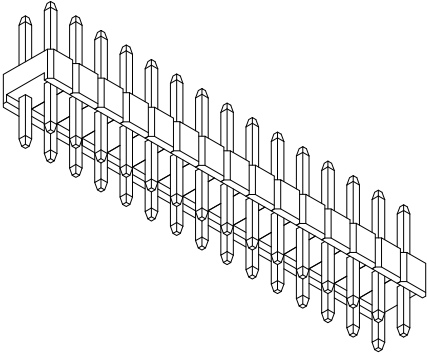
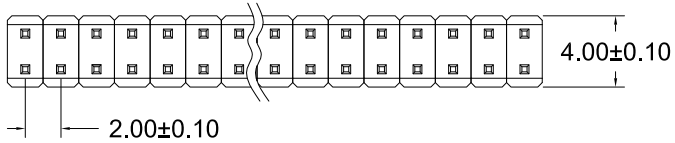
### SPECIFICATIONS

**Material:**

Insulator: Glass filled PA6T (UL94V-0),  
 Black Contacts: Brass  
 Plating: Au or Sn over 30 μ" Ni

**Electrical Characteristics:**

Contact Resistance: 20mΩ Max.  
 Insulator Resistance: 1000MΩ Min.  
 Withstanding Voltage: AC 500V  
 Currernt Rating: 1.0 AMP  
 Operating Temperature range: -40°C to +105°C  
 Resistance to Soldering Heat: 255°C ±5°C  
 Spacing: 2.0  
 Salt sprar test: 24H



<b>RONMEE</b>		榮國工業股份有限公司 Ronmee Industrial Corporation			
		Double Base Female Header 2.0雙排排針			
Tolerance	Projection	Drawn: Joey.Lin		P/N:	PH2.0-XXP2GF-8.7AR
Angle ± 5°		Checked: C.L.Jang		File No:	
x. ±0.50		Approved: R.X.Lin		Unit: mm.	Sheet: 1/1.
x. x ±0.30				Size: A4.	
x. x. x ±0.10					
x° ±1°					