

4

3

2

1

Rev	Description	Date
0	New Drawing	2022/02/17

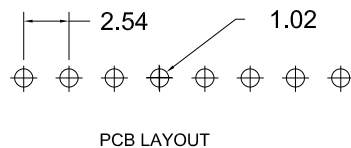
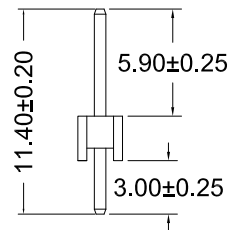
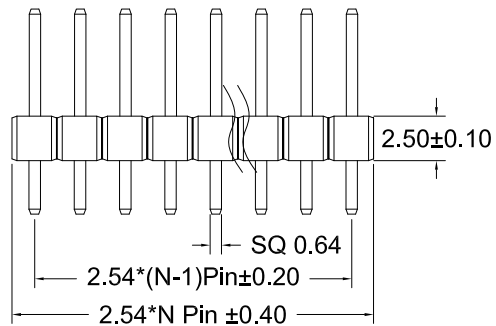
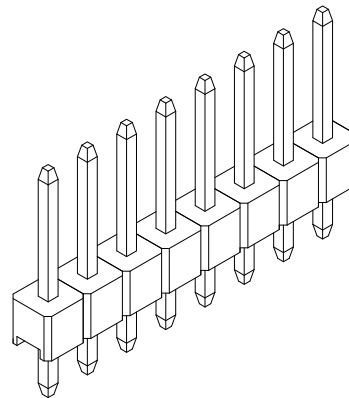
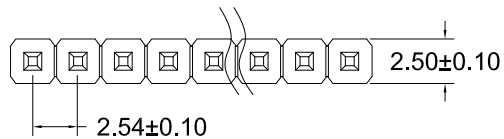
SPECIFICATIONS

Material:

Insulator: Glass filled PA6T (UL94V-0),
 Black Contacts: Brass
 Plating: Au or Sn over 30 μ" Ni

Electrical Characteristics:

Contact Resistance: 20mΩ Max.
 Insulator Resistance: 1000MΩ Min.
 Withstanding Voltage: AC 500V
 Currnt Rating: 1.0 AMP
 Operating Temperature range: -40°C to +105°C
 Resistance to Soldering Heat: 255°C ± 5°C
 Spacing: 2.54
 Salt sprar test: 24H



RONMEE

榮國工業股份有限公司
 Ronmee Industrial Corporation

Tolerance Angle ± 5° x. ±0.50 x. x ±0.30 x. x. x ±0.10 x° ±1°	Projection 	2.54 Single Base Female Header 2.54 單排排針		
	Drawn: Joey.Lin	P/N:	PH2.54-XXP/1GF-11.4AR	
	Checked: C.L.Jang	File No:		
	Approved: R.X.Lin	Unit: mm.	Sheet: 1/1.	Size: A4.

4

3

2

1

A