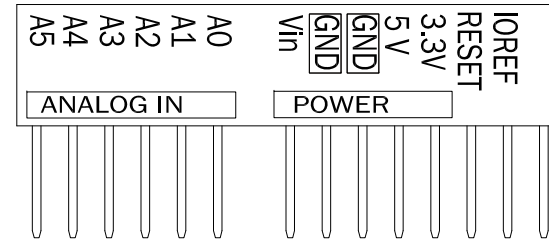
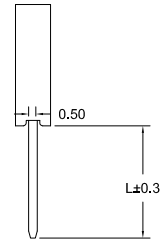
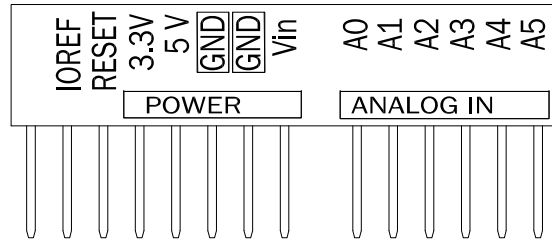


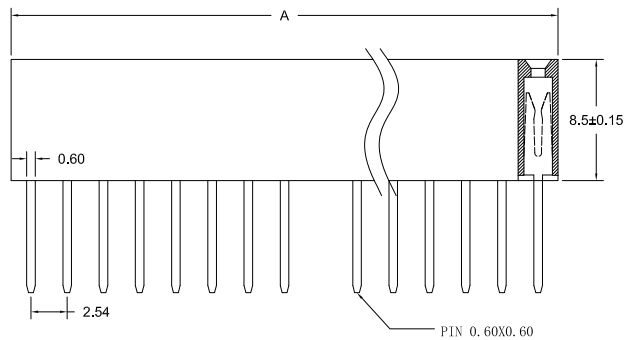
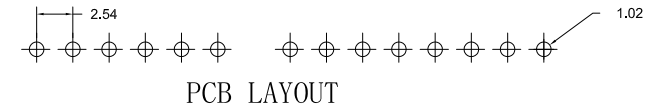
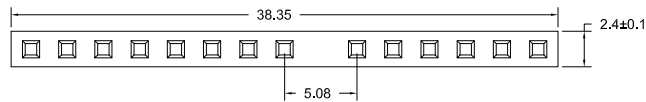


Rev	Description	Date
0	New Release	12/12/21

8+6 Outside



L=14.3
L=19.0



Material:

Insulator: UL94V-0,Black

Contacts: Brass

Finish:

Contact Plating:

1U" Au over 50u"Ni

Specification:

Contact Resistance:20mΩ Max.

Insulator Resistance:1000MΩ Min.

Withstanding Voltage:AC 1000V

Current Rating:3 AMP

Operating Temperature:-40°C to +105°C

Part No.	L
FH-8+6-M	14.3mm
FH-8+6-L	19.0mm

RONMEE

榮國工業股份有限公司
Ronmee Industrial Corporation

Tolerance Angle ± 5° x. ±0.50 x. x ±0.30 x. x. x ±0.10 x° ±1°	Projection 	2.54mm Combined Female Header, 8+6P Straight, Insulator 8.5mm, Tail 14.3/19.0mm		
	Drawn:	Joey.Lin	P/ N : FH-8+6-X	
	Checked:	C.L.Jang	File No: FH-8+6-X	
	Approved:	R.X.Lin	Unit: mm.	Sheet : 1/1.